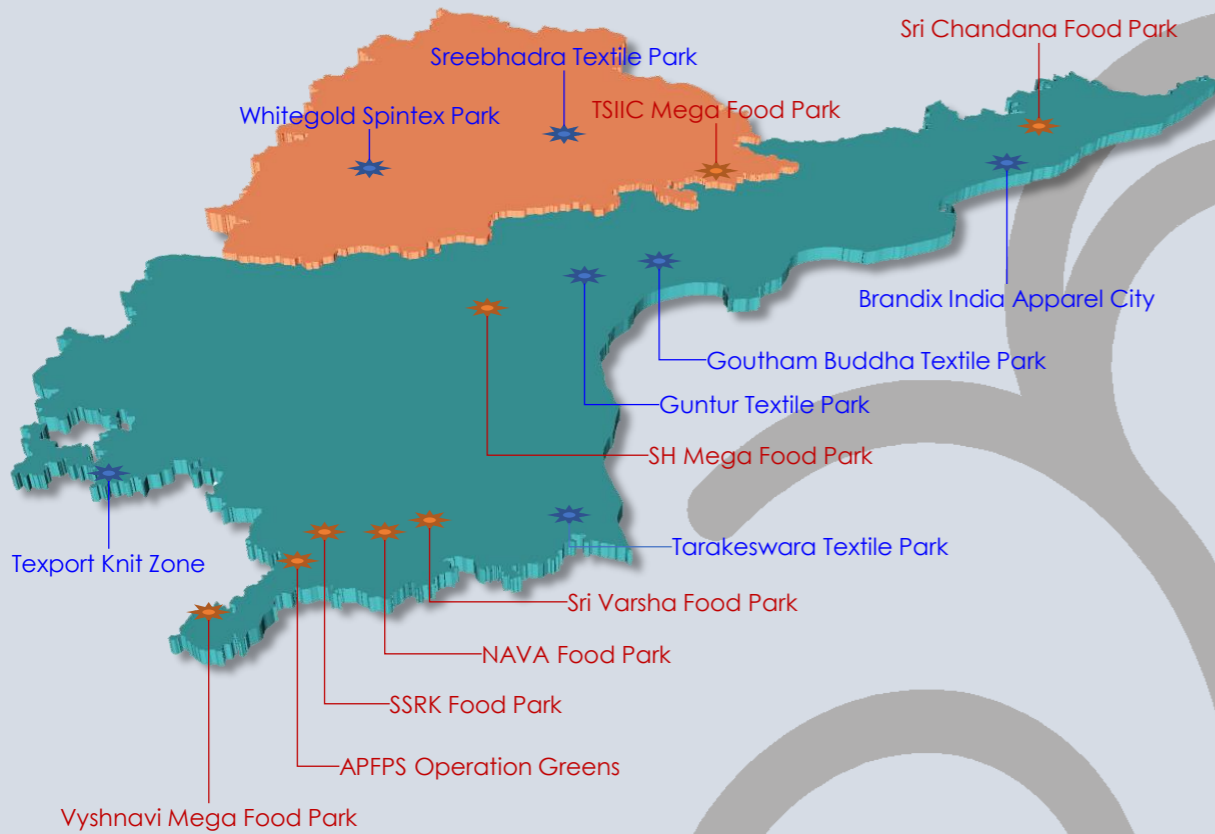




**ASSESS**

Industrial Infrastructure  
Tourism Infrastructure  
Urban Infrastructure



**ASSESS Strategic Infra Solutions Pvt Ltd (ASSESS)** founded in the year 2014, is an initiative towards providing optimal infrastructure solutions for development of Small & Medium Enterprises (SMEs), on a cluster platform through Public Private Partnership (PPP) approach.

**ASSESS** is a desired "specialised" advisory, consulting and management services firm and "specifically" a strategic partner to its clients in business transformation, project development and future outlook



## INDUSTRIAL PARKS/ CLUSTERS/ ESTATES/ ZONES

Advisory Services from Concept to Commissioning



**ASSESS**

**Assess Strategic Infra Solutions**

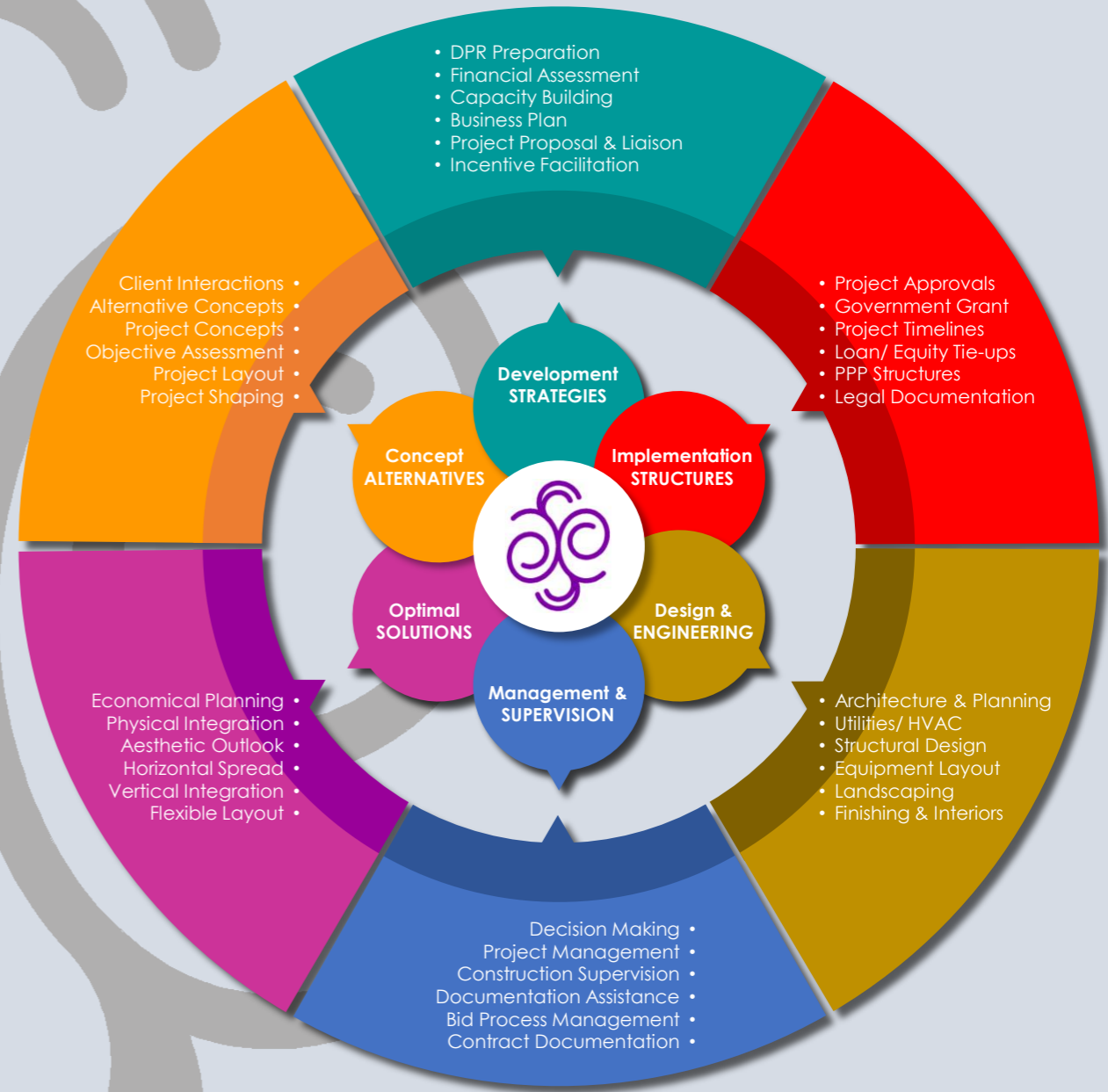
#1258 (Gr. Floor), Rd. No.63, Jubilee Hills,  
Hyderabad, Telangana 500033, INDIA

- +91 77999 58880/ +91 7893 555 536
- [info@assessinfra.in](mailto:info@assessinfra.in)
- [www.assessinfra.in](http://www.assessinfra.in)

Mega Food Parks | Integrated Food Parks | Agro Processing Clusters | Integrated Textile Parks  
Electronic Manufacturing Clusters | Leather Parks | Plastic Parks | MSME Clusters

**ASSESS** provides/ facilitates the entire gamut of services required to ensure that the project is taken through the process of 'Concept to Commissioning' and presents a clear future outlook

**ASSESS** brings to the table a comprehensive understanding of several requirements of implementation of an industrial park/ unit ranging from design, engineering, planning, secretarial, legal, financial, risk, equity tie-ups, grant funding, incentives, taxation, business plan, marketing etc. **ASSESS** provides one-stop advise/ solutions to all these aspects and is better placed to deliver



**ASSESS** and its Associates have in-house expertise in the areas/ fields of:

- Architecture, Urban & Regional Planning
- Environmental Planning
- Infrastructure Planning & Development
  - Project Development, Project Finance
  - Detailed Engineering
  - Project Management & Supervision
  - Risk, Legal & Secretarial aspects
- Structures & Utilities Engineering
- Policy Advocacy and Facilitation

**ASSESS** banks on its high degree of expertise in conceptualisation, development and implementation of industrial parks and units across sectors involving diverse and multiple stakeholders

Associates/ Domain Experts

**ASSESS** is an empanelled PMC with Andhra Pradesh Food Processing Society (APFPS) for providing PMC services to Food Parks and Food Processing Units in Andhra Pradesh State

